

PROJECT: \_\_\_\_\_ ITEM NO.: \_\_\_\_\_



# ACCESSORIES



## ADJUSTABLE SUPPORT LEGS

- Sold in sets of two legs
- Two support legs can be added to small or medium size disposers for added stability
- Three support legs are included with all large disposers
- Recommended when using the following disposer mounting adapters: 11378A, 11378B, 11378C, 11599H, 11599K, 11599N
- P/N 11757C



## FLANGE FOOT

- Provides secure floor mounting option for commercial disposers
- Use anywhere extra stability or security is a concern
- Flange foot is sold individually and includes one set screw
- Order two feet for medium size units and three feet for large units
- P/N 14394



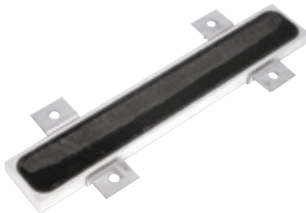
## THROAT GUARD

- Throat Guard mounts at the throat opening of the disposer
- Keeps hands safely away from disposer grind chamber
- Cannot be removed while disposer is installed on sink or trough
- Fits any disposer with a standard 6<sup>5</sup>/<sub>8</sub>" throat opening
- Includes gasket and mounting bolts
- P/N 13620



## TAMPER-PROOF CONTROL PANEL SCREWS

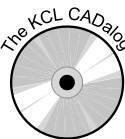
- Replaces standard closure screws on disposer control panels
- Eliminates unauthorized entry into control panel for safety and security
- For use with CC-101, CC-202, AS-101, WX-101 and PR-101 disposer control panels
- Includes four control panel replacement screws and matching wrench
- P/N 13946



## MAGNETIC SILVER SAVER

- Mounts to any trough system
- To order, specify part# 13983
- One Trough Magnetic Silver Saver approximately 18 inches from disposer hole is recommended. Additional magnets along length of trough are optional.

Our products appear on **The KCL CADalog** CD-ROM based CAD Foodservice Symbol Library. More information is available from **Kochman Consultants, Ltd.** at [www.kclcad.com](http://www.kclcad.com).



4700 21st STREET  
RACINE, WI 53406  
TEL: 800-845-8345  
FAX: 262-554-3620

[www.insinkerator.com](http://www.insinkerator.com)



The Emerson logo is a trademark and a service mark of Emerson Electric Co.

