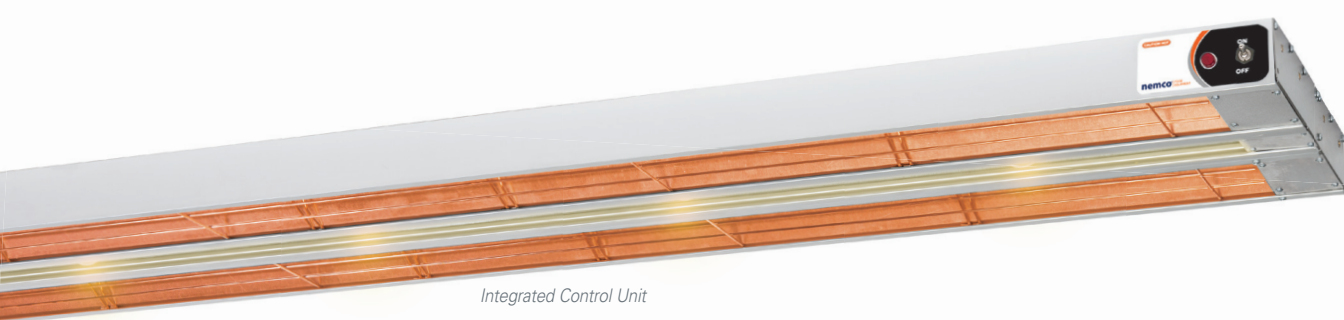


ONLY FROM

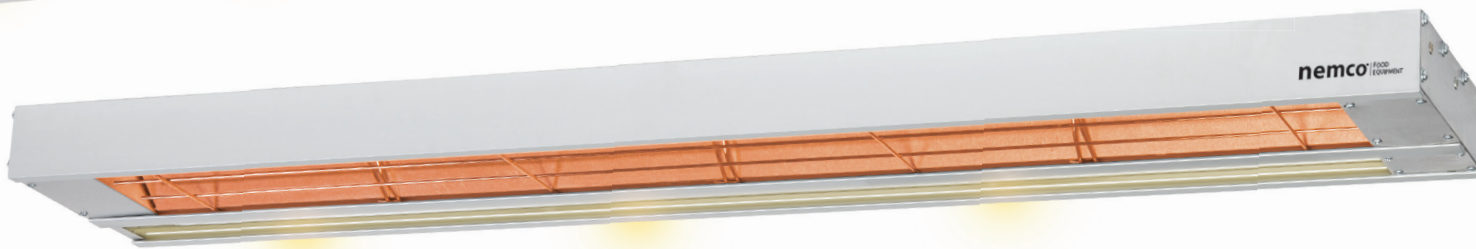
**nemco**<sup>®</sup> | FOOD  
EQUIPMENT

# Infrared Strip Heaters

Hold foods for optimum quality and presentation with a strip heater that perfectly fits your operation! Nemco's broad line is sure to have a solution for you.



*Integrated Control Unit*



*Remote Control Unit*



Buy once. Buy the original.  
**Always look for this mark of quality**





# Glowing Performance

High-volume foodservice establishments of all sizes are finding the ideal temperature-holding solutions they need inside the diverse lineup of strip heaters from Nemco—the fastest rising name in food-warming equipment.

## Just What Your Bottom Line Needs

Compact, dependable and unapologetically price-competitive, Nemco's full line of strip heaters performs as well as, if not better, than any other name on the market, for maximum ROI.

- Against any other strip heater, Nemco's designs do extremely well holding foods at serving temperatures without drying or overcooking.
- Durable, lightweight, clear-anodized aluminum extrusion housings promise long life and easy cleanup.
- Other commercial-grade features include aluminized steel reflectors and shatter-resistant bulbs.

## On the Same Wavelength With You

Whatever you're thinking, Nemco has a model with just the right features to meet your needs, including:

- Hanging, base-mount and pass-through options (pictured, right) to best serve your kitchen, serving-line or counter-space application.
- Single- or double-warmer options for smaller or larger heat zones.
- Standard on/off or infinite-temperature control.
- Showcase lighting available to enhance food presentation.
- Units available with a cord, literally for plug-and-play operation, with no need for hard-wire installations.
- Remote-control devices available to locate the temperature control away from the actual warmer, and place it where it best serves your operation.

## Suggested Uses

*Hold foods at proper temperatures until you're ready to serve. A favorite for French fries, rice dishes, baked potatoes, fried chicken, pizza and large pans of food. Also works well as a plate or cup warmer.*

## General Specifications

### Optional Accessories

Model	Description
66089	Pan and Screen Set, 12" x 20"
66091	Tray for 6152-24
66099	Wire Leg Kit, 16" Tall



*Model 6150-24, with hanging brackets*



*Model 6152-24, with 66089*



*Model 6150-24, with 66099*

*Power option: Standard on/off toggle switch (shown) or 'infinite' temperature control dial for varying low, medium and high heat settings*

*Aluminum-extrusion housings are durable, yet lightweight, with clear anodizing that protects the surface finish from damage*

*Aluminized-steel reflector ensures all heat radiating off the bulb is directed down upon the food*

*40W incandescent shatterproof bulbs*



*Optional cord-and-plug units simplify installation*



*Optional showcase lighting adds visual appeal*

# SINGLE



# DUAL

## Integrated Control Units

Choose your integrated control strip heater with an on/off toggle switch or infinite temperature control.

### SINGLE | On/Off Toggle Switch



Model #	Size (w x h x l)	Volts	Watts	Amps
6150-24*	6 <sup>3</sup> / <sub>4</sub> " x 2 <sup>3</sup> / <sub>4</sub> " x 24"	120	500	4.2
6150-24-208	6 <sup>3</sup> / <sub>4</sub> " x 2 <sup>3</sup> / <sub>4</sub> " x 24"	208	500	2.4
6150-24-240	6 <sup>3</sup> / <sub>4</sub> " x 2 <sup>3</sup> / <sub>4</sub> " x 24"	240	500	2.1
6150-36*	6 <sup>3</sup> / <sub>4</sub> " x 2 <sup>3</sup> / <sub>4</sub> " x 36"	120	850	7.1
6150-36-208	6 <sup>3</sup> / <sub>4</sub> " x 2 <sup>3</sup> / <sub>4</sub> " x 36"	208	850	4.1
6150-36-240	6 <sup>3</sup> / <sub>4</sub> " x 2 <sup>3</sup> / <sub>4</sub> " x 36"	240	850	3.5
6150-48*	6 <sup>3</sup> / <sub>4</sub> " x 2 <sup>3</sup> / <sub>4</sub> " x 48"	120	1100	9.2
6150-48-208	6 <sup>3</sup> / <sub>4</sub> " x 2 <sup>3</sup> / <sub>4</sub> " x 48"	208	1100	5.3
6150-48-240	6 <sup>3</sup> / <sub>4</sub> " x 2 <sup>3</sup> / <sub>4</sub> " x 48"	240	1100	4.6
6150-60*	6 <sup>3</sup> / <sub>4</sub> " x 2 <sup>3</sup> / <sub>4</sub> " x 60"	120	1400	11.7
6150-60-208	6 <sup>3</sup> / <sub>4</sub> " x 2 <sup>3</sup> / <sub>4</sub> " x 60"	208	1400	6.7
6150-60-240	6 <sup>3</sup> / <sub>4</sub> " x 2 <sup>3</sup> / <sub>4</sub> " x 60"	240	1400	5.8
6150-72*	6 <sup>3</sup> / <sub>4</sub> " x 2 <sup>3</sup> / <sub>4</sub> " x 72"	120	1725	14.4
6150-72-208	6 <sup>3</sup> / <sub>4</sub> " x 2 <sup>3</sup> / <sub>4</sub> " x 72"	208	1725	8.3
6150-72-240	6 <sup>3</sup> / <sub>4</sub> " x 2 <sup>3</sup> / <sub>4</sub> " x 72"	240	1725	7.2
6152-24**	6 <sup>3</sup> / <sub>4</sub> " x 2 <sup>3</sup> / <sub>4</sub> " x 24"	120	500	4.2

\*For factory-installed cord and plug set models (24"-72"), please add "-CP" to the model number when ordering. \*\*Strip Heater is mounted to base.

### SINGLE | On/Off Toggle Switch with Lights



Model #	Size (w x h x l)	Volts	Watts	Amps
6150-24-SL	9" x 2 <sup>3</sup> / <sub>4</sub> " x 24"	120	580	4.8
6150-24-SL-208	9" x 2 <sup>3</sup> / <sub>4</sub> " x 24"	208	580	2.8
6150-24-SL-240	9" x 2 <sup>3</sup> / <sub>4</sub> " x 24"	240	580	2.4
6150-36-SL	9" x 2 <sup>3</sup> / <sub>4</sub> " x 36"	120	970	7.8
6150-36-SL-208	9" x 2 <sup>3</sup> / <sub>4</sub> " x 36"	208	970	4.5
6150-36-SL-240	9" x 2 <sup>3</sup> / <sub>4</sub> " x 36"	240	970	3.9
6150-48-SL	9" x 2 <sup>3</sup> / <sub>4</sub> " x 48"	120	1220	10.2
6150-48-SL-208	9" x 2 <sup>3</sup> / <sub>4</sub> " x 48"	208	1220	5.9
6150-48-SL-240	9" x 2 <sup>3</sup> / <sub>4</sub> " x 48"	240	1220	5.1
6150-60-SL	9" x 2 <sup>3</sup> / <sub>4</sub> " x 60"	120	1560	13.0
6150-60-SL-208	9" x 2 <sup>3</sup> / <sub>4</sub> " x 60"	208	1560	7.5
6150-60-SL-240	9" x 2 <sup>3</sup> / <sub>4</sub> " x 60"	240	1560	6.5
6150-72-SL	9" x 2 <sup>3</sup> / <sub>4</sub> " x 72"	120	1885	15.7
6150-72-SL-208	9" x 2 <sup>3</sup> / <sub>4</sub> " x 72"	208	1885	9.1
6150-72-SL-240	9" x 2 <sup>3</sup> / <sub>4</sub> " x 72"	240	1885	7.9

### SINGLE | Infinite Temperature Control



Model #	Size (w x h x l)	Volts	Watts	Amps
6151-24*	6 <sup>3</sup> / <sub>4</sub> " x 2 <sup>3</sup> / <sub>4</sub> " x 24"	120	500	4.2
6151-24-208	6 <sup>3</sup> / <sub>4</sub> " x 2 <sup>3</sup> / <sub>4</sub> " x 24"	208	500	2.4
6151-24-240	6 <sup>3</sup> / <sub>4</sub> " x 2 <sup>3</sup> / <sub>4</sub> " x 24"	240	500	2.1
6151-36*	6 <sup>3</sup> / <sub>4</sub> " x 2 <sup>3</sup> / <sub>4</sub> " x 36"	120	850	7.1
6151-36-208	6 <sup>3</sup> / <sub>4</sub> " x 2 <sup>3</sup> / <sub>4</sub> " x 36"	208	850	4.1
6151-36-240	6 <sup>3</sup> / <sub>4</sub> " x 2 <sup>3</sup> / <sub>4</sub> " x 36"	240	850	3.5
6151-48*	6 <sup>3</sup> / <sub>4</sub> " x 2 <sup>3</sup> / <sub>4</sub> " x 48"	120	1100	9.2
6151-48-208	6 <sup>3</sup> / <sub>4</sub> " x 2 <sup>3</sup> / <sub>4</sub> " x 48"	208	1100	5.3
6151-48-240	6 <sup>3</sup> / <sub>4</sub> " x 2 <sup>3</sup> / <sub>4</sub> " x 48"	240	1100	4.6
6151-60*	6 <sup>3</sup> / <sub>4</sub> " x 2 <sup>3</sup> / <sub>4</sub> " x 60"	120	1400	11.7
6151-60-208	6 <sup>3</sup> / <sub>4</sub> " x 2 <sup>3</sup> / <sub>4</sub> " x 60"	208	1400	6.7
6151-60-240	6 <sup>3</sup> / <sub>4</sub> " x 2 <sup>3</sup> / <sub>4</sub> " x 60"	240	1400	5.8
6151-72*	6 <sup>3</sup> / <sub>4</sub> " x 2 <sup>3</sup> / <sub>4</sub> " x 72"	120	1440	12.0
6151-72-208	6 <sup>3</sup> / <sub>4</sub> " x 2 <sup>3</sup> / <sub>4</sub> " x 72"	208	1440	6.9
6151-72-240	6 <sup>3</sup> / <sub>4</sub> " x 2 <sup>3</sup> / <sub>4</sub> " x 72"	240	1440	6.0

\*For factory-installed cord and plug set models (24"-72"), please add "-CP" to the model number when ordering.

### DUAL | On/Off Toggle Switch

Model #	Size (w x h x l)	Volts	Watts	Amps
6150-24-D	13 <sup>1</sup> / <sub>2</sub> " x 2 <sup>3</sup> / <sub>4</sub> " x 24"	120	1000	8.3
6150-24-D-208	13 <sup>1</sup> / <sub>2</sub> " x 2 <sup>3</sup> / <sub>4</sub> " x 24"	208	1000	4.8
6150-24-D-240	13 <sup>1</sup> / <sub>2</sub> " x 2 <sup>3</sup> / <sub>4</sub> " x 24"	240	1000	4.2
6150-36-D	13 <sup>1</sup> / <sub>2</sub> " x 2 <sup>3</sup> / <sub>4</sub> " x 36"	120	1700	14.2
6150-36-D-208	13 <sup>1</sup> / <sub>2</sub> " x 2 <sup>3</sup> / <sub>4</sub> " x 36"	208	1700	8.2
6150-36-D-240	13 <sup>1</sup> / <sub>2</sub> " x 2 <sup>3</sup> / <sub>4</sub> " x 36"	240	1700	7.1
6150-48-D-208	13 <sup>1</sup> / <sub>2</sub> " x 2 <sup>3</sup> / <sub>4</sub> " x 48"	208	2200	10.6
6150-48-D-240	13 <sup>1</sup> / <sub>2</sub> " x 2 <sup>3</sup> / <sub>4</sub> " x 48"	240	2200	9.2
6150-60-D-208	13 <sup>1</sup> / <sub>2</sub> " x 2 <sup>3</sup> / <sub>4</sub> " x 60"	208	2800	13.5
6150-60-D-240	13 <sup>1</sup> / <sub>2</sub> " x 2 <sup>3</sup> / <sub>4</sub> " x 60"	240	2800	11.7
6150-72-D-208	13 <sup>1</sup> / <sub>2</sub> " x 2 <sup>3</sup> / <sub>4</sub> " x 72"	208	3450	16.6
6150-72-D-240	13 <sup>1</sup> / <sub>2</sub> " x 2 <sup>3</sup> / <sub>4</sub> " x 72"	240	3450	14.4

### DUAL | On/Off Toggle Switch with Lights



Model #	Size (w x h x l)	Volts	Watts	Amps
6150-24-DL	15 <sup>3</sup> / <sub>4</sub> " x 2 <sup>3</sup> / <sub>4</sub> " x 24"	120	1080	9.0
6150-24-DL-208	15 <sup>3</sup> / <sub>4</sub> " x 2 <sup>3</sup> / <sub>4</sub> " x 24"	208	1080	5.2
6150-24-DL-240	15 <sup>3</sup> / <sub>4</sub> " x 2 <sup>3</sup> / <sub>4</sub> " x 24"	240	1080	4.5
6150-36-DL	15 <sup>3</sup> / <sub>4</sub> " x 2 <sup>3</sup> / <sub>4</sub> " x 36"	120	1780	14.8
6150-36-DL-208	15 <sup>3</sup> / <sub>4</sub> " x 2 <sup>3</sup> / <sub>4</sub> " x 36"	208	1780	8.6
6150-36-DL-240	15 <sup>3</sup> / <sub>4</sub> " x 2 <sup>3</sup> / <sub>4</sub> " x 36"	240	1780	7.4
6150-48-DL-208	15 <sup>3</sup> / <sub>4</sub> " x 2 <sup>3</sup> / <sub>4</sub> " x 48"	208	2320	11.2
6150-48-DL-240	15 <sup>3</sup> / <sub>4</sub> " x 2 <sup>3</sup> / <sub>4</sub> " x 48"	240	2320	9.7
6150-60-DL-208	15 <sup>3</sup> / <sub>4</sub> " x 2 <sup>3</sup> / <sub>4</sub> " x 60"	208	2960	14.2
6150-60-DL-240	15 <sup>3</sup> / <sub>4</sub> " x 2 <sup>3</sup> / <sub>4</sub> " x 60"	240	2960	12.3
6150-72-DL-208	15 <sup>3</sup> / <sub>4</sub> " x 2 <sup>3</sup> / <sub>4</sub> " x 72"	208	3610	17.4
6150-72-DL-240	15 <sup>3</sup> / <sub>4</sub> " x 2 <sup>3</sup> / <sub>4</sub> " x 72"	240	3610	15.0

### DUAL | Infinite Temperature Control

Model #	Size (w x h x l)	Volts	Watts	Amps
6151-24-D	13 <sup>1</sup> / <sub>2</sub> " x 2 <sup>3</sup> / <sub>4</sub> " x 24"	120	1000	8.3
6151-24-D-208	13 <sup>1</sup> / <sub>2</sub> " x 2 <sup>3</sup> / <sub>4</sub> " x 24"	208	1000	4.8
6151-24-D-240	13 <sup>1</sup> / <sub>2</sub> " x 2 <sup>3</sup> / <sub>4</sub> " x 24"	240	1000	4.2
6151-36-D	13 <sup>1</sup> / <sub>2</sub> " x 2 <sup>3</sup> / <sub>4</sub> " x 36"	120	1700	14.2
6151-36-D-208	13 <sup>1</sup> / <sub>2</sub> " x 2 <sup>3</sup> / <sub>4</sub> " x 36"	208	1700	8.2
6151-36-D-240	13 <sup>1</sup> / <sub>2</sub> " x 2 <sup>3</sup> / <sub>4</sub> " x 36"	240	1700	7.1
6151-48-D-208	13 <sup>1</sup> / <sub>2</sub> " x 2 <sup>3</sup> / <sub>4</sub> " x 48"	208	2200	10.6
6151-48-D-240	13 <sup>1</sup> / <sub>2</sub> " x 2 <sup>3</sup> / <sub>4</sub> " x 48"	240	2200	9.2
6151-60-D-208	13 <sup>1</sup> / <sub>2</sub> " x 2 <sup>3</sup> / <sub>4</sub> " x 60"	208	2800	13.5
6151-60-D-240	13 <sup>1</sup> / <sub>2</sub> " x 2 <sup>3</sup> / <sub>4</sub> " x 60"	240	2800	11.7



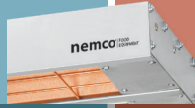
Cord and Plug Option Available



with Lights



# SINGLE



# DUAL

## Remote Control Units

Choose your remote-controlled strip heater with an on/off toggle switch or infinite temperature control.

### SINGLE



These models can be outfitted with the following remote control boxes:  
Model #69007, 69008. (see below for remote control details.)

Model #	Size (w x h x l)	Volts	Watts	Amps
6155-24	6 <sup>3</sup> / <sub>4</sub> " x 2 <sup>3</sup> / <sub>4</sub> " x 24"	120	500	4.2
6155-24-208	6 <sup>3</sup> / <sub>4</sub> " x 2 <sup>3</sup> / <sub>4</sub> " x 24"	208	500	2.4
6155-24-240	6 <sup>3</sup> / <sub>4</sub> " x 2 <sup>3</sup> / <sub>4</sub> " x 24"	240	500	2.1
6155-36	6 <sup>3</sup> / <sub>4</sub> " x 2 <sup>3</sup> / <sub>4</sub> " x 36"	120	850	7.1
6155-36-208	6 <sup>3</sup> / <sub>4</sub> " x 2 <sup>3</sup> / <sub>4</sub> " x 36"	208	850	4.1
6155-36-240	6 <sup>3</sup> / <sub>4</sub> " x 2 <sup>3</sup> / <sub>4</sub> " x 36"	240	850	3.5
6155-48	6 <sup>3</sup> / <sub>4</sub> " x 2 <sup>3</sup> / <sub>4</sub> " x 48"	120	1100	9.2
6155-48-208	6 <sup>3</sup> / <sub>4</sub> " x 2 <sup>3</sup> / <sub>4</sub> " x 48"	208	1100	5.3
6155-48-240	6 <sup>3</sup> / <sub>4</sub> " x 2 <sup>3</sup> / <sub>4</sub> " x 48"	240	1100	4.6
6155-60	6 <sup>3</sup> / <sub>4</sub> " x 2 <sup>3</sup> / <sub>4</sub> " x 60"	120	1400	11.7
6155-60-208	6 <sup>3</sup> / <sub>4</sub> " x 2 <sup>3</sup> / <sub>4</sub> " x 60"	208	1400	6.7
6155-60-240	6 <sup>3</sup> / <sub>4</sub> " x 2 <sup>3</sup> / <sub>4</sub> " x 60"	240	1400	5.8
6155-72	6 <sup>3</sup> / <sub>4</sub> " x 2 <sup>3</sup> / <sub>4</sub> " x 72"	120	1725	14.4
6155-72-208	6 <sup>3</sup> / <sub>4</sub> " x 2 <sup>3</sup> / <sub>4</sub> " x 72"	208	1725	8.3
6155-72-240	6 <sup>3</sup> / <sub>4</sub> " x 2 <sup>3</sup> / <sub>4</sub> " x 72"	240	1725	7.2

### SINGLE | with Lights



These models can be outfitted with the following remote control boxes:  
Model #69007, 69008. (see below for remote control details.)

Model #	Size (w x h x l)	Volts	Watts	Amps
6155-24-SL	9" x 2 <sup>3</sup> / <sub>4</sub> " x 24"	120	580	4.8
6155-24-SL-208	9" x 2 <sup>3</sup> / <sub>4</sub> " x 24"	208	580	2.8
6155-24-SL-240	9" x 2 <sup>3</sup> / <sub>4</sub> " x 24"	240	580	2.4
6155-36-SL	9" x 2 <sup>3</sup> / <sub>4</sub> " x 36"	120	970	8.1
6155-36-SL-208	9" x 2 <sup>3</sup> / <sub>4</sub> " x 36"	208	970	4.7
6155-36-SL-240	9" x 2 <sup>3</sup> / <sub>4</sub> " x 36"	240	970	4.0
6155-48-SL	9" x 2 <sup>3</sup> / <sub>4</sub> " x 48"	120	1220	10.2
6155-48-SL-208	9" x 2 <sup>3</sup> / <sub>4</sub> " x 48"	208	1220	5.9
6155-48-SL-240	9" x 2 <sup>3</sup> / <sub>4</sub> " x 48"	240	1220	5.1
6155-60-SL	9" x 2 <sup>3</sup> / <sub>4</sub> " x 60"	120	1560	13.0
6155-60-SL-208	9" x 2 <sup>3</sup> / <sub>4</sub> " x 60"	208	1560	7.5
6155-60-SL-240	9" x 2 <sup>3</sup> / <sub>4</sub> " x 60"	240	1560	6.5
6155-72-SL	9" x 2 <sup>3</sup> / <sub>4</sub> " x 72"	120	1885	15.7
6155-72-SL-208	9" x 2 <sup>3</sup> / <sub>4</sub> " x 72"	208	1885	9.1
6155-72-SL-240	9" x 2 <sup>3</sup> / <sub>4</sub> " x 72"	240	1885	7.9

### Remote Control Box

Remotes available for single and dual units, and your choice of an on/off toggle switch or infinite temperature control.

Model #	Description	Size (w x h x l)	Volts
69007	1-On/Off Power Switch, 1-Pilot Light (indicates element on)	6" x 2 <sup>9</sup> / <sub>16</sub> " x 3 <sup>1</sup> / <sub>8</sub> "	120
69008	1-On/Off Power Switch, 1-Pilot Light (indicates element on), 1-Infinite Control (adjustable temperature)	6" x 2 <sup>9</sup> / <sub>16</sub> " x 3 <sup>1</sup> / <sub>8</sub> "	120
69007-2	2-On/Off Power Switches (elements), 1-On/Off Power Switch (lights), 2-Pilot Lights (indicates elements on)	6" x 5 <sup>9</sup> / <sub>16</sub> " x 6 <sup>1</sup> / <sub>8</sub> "	120
69008-2	1-On/Off Power Switch, 2-Pilot Lights (indicates elements on), 2-Infinite Control (adjustable temperature)	6" x 6 <sup>9</sup> / <sub>16</sub> " x 7 <sup>1</sup> / <sub>8</sub> "	120

208/240V models are also available. Add -240 to model number when ordering.

### DUAL



These models can be outfitted with the following remote control boxes:  
Model #69007-2, 69008-2. (see below for remote control details.)

Model #	Size (w x h x l)	Volts	Watts	Amps
6155-24-D	13 <sup>1</sup> / <sub>2</sub> " x 2 <sup>3</sup> / <sub>4</sub> " x 24"	120	1000	8.3
6155-24-D-208	13 <sup>1</sup> / <sub>2</sub> " x 2 <sup>3</sup> / <sub>4</sub> " x 24"	208	1000	4.8
6155-24-D-240	13 <sup>1</sup> / <sub>2</sub> " x 2 <sup>3</sup> / <sub>4</sub> " x 24"	240	1000	4.2
6155-36-D	13 <sup>1</sup> / <sub>2</sub> " x 2 <sup>3</sup> / <sub>4</sub> " x 36"	120	1700	14.2
6155-36-D-208	13 <sup>1</sup> / <sub>2</sub> " x 2 <sup>3</sup> / <sub>4</sub> " x 36"	208	1700	8.2
6155-36-D-240	13 <sup>1</sup> / <sub>2</sub> " x 2 <sup>3</sup> / <sub>4</sub> " x 36"	240	1700	7.1
6155-48-D-208	13 <sup>1</sup> / <sub>2</sub> " x 2 <sup>3</sup> / <sub>4</sub> " x 48"	208	2200	10.6
6155-48-D-240	13 <sup>1</sup> / <sub>2</sub> " x 2 <sup>3</sup> / <sub>4</sub> " x 48"	240	2200	9.2
6155-60-D-208	13 <sup>1</sup> / <sub>2</sub> " x 2 <sup>3</sup> / <sub>4</sub> " x 60"	208	2800	13.5
6155-60-D-240	13 <sup>1</sup> / <sub>2</sub> " x 2 <sup>3</sup> / <sub>4</sub> " x 60"	240	2800	11.7
6155-72-D-208	13 <sup>1</sup> / <sub>2</sub> " x 2 <sup>3</sup> / <sub>4</sub> " x 72"	208	3450	16.6
6155-72-D-240	13 <sup>1</sup> / <sub>2</sub> " x 2 <sup>3</sup> / <sub>4</sub> " x 72"	240	3450	14.4

### DUAL | with Lights



These models can be outfitted with the following remote control boxes:  
Model #69007-2, 69008-2. (see below for remote control details.)

Model #	Size (w x h x l)	Volts	Watts	Amps
6155-24-DL	15 <sup>3</sup> / <sub>4</sub> " x 2 <sup>3</sup> / <sub>4</sub> " x 24"	120	1080	9.0
6155-24-DL-208	15 <sup>3</sup> / <sub>4</sub> " x 2 <sup>3</sup> / <sub>4</sub> " x 24"	208	1080	5.2
6155-24-DL-240	15 <sup>3</sup> / <sub>4</sub> " x 2 <sup>3</sup> / <sub>4</sub> " x 24"	240	1080	4.5
6155-36-DL	15 <sup>3</sup> / <sub>4</sub> " x 2 <sup>3</sup> / <sub>4</sub> " x 36"	120	1780	14.8
6155-36-DL-208	15 <sup>3</sup> / <sub>4</sub> " x 2 <sup>3</sup> / <sub>4</sub> " x 36"	208	1780	8.6
6155-36-DL-240	15 <sup>3</sup> / <sub>4</sub> " x 2 <sup>3</sup> / <sub>4</sub> " x 36"	240	1780	7.4
6155-48-DL-208	15 <sup>3</sup> / <sub>4</sub> " x 2 <sup>3</sup> / <sub>4</sub> " x 48"	208	2320	11.2
6155-48-DL-240	15 <sup>3</sup> / <sub>4</sub> " x 2 <sup>3</sup> / <sub>4</sub> " x 48"	240	2320	9.7
6155-60-DL-208	15 <sup>3</sup> / <sub>4</sub> " x 2 <sup>3</sup> / <sub>4</sub> " x 60"	208	2960	14.2
6155-60-DL-240	15 <sup>3</sup> / <sub>4</sub> " x 2 <sup>3</sup> / <sub>4</sub> " x 60"	240	2960	12.3
6155-72-DL-208	15 <sup>3</sup> / <sub>4</sub> " x 2 <sup>3</sup> / <sub>4</sub> " x 72"	208	3610	17.4
6155-72-DL-240	15 <sup>3</sup> / <sub>4</sub> " x 2 <sup>3</sup> / <sub>4</sub> " x 72"	240	3610	15.0

Replacement parts are available through Nemco's 24-hour Zip Program.

Nemco reserves the right to make design, specification or model changes without notice.



**nemco** FOOD EQUIPMENT

Physical Address: Corporate HQ  
301 Meuse Argonne | Hicksville, OH 43526  
800.782.6761 • 419.542.7751 • f: 419.542.6690

Mailing Address:  
PO Box 305 | Hicksville, OH 43526

Nemco West Distribution Center/Test Kitchen  
4300 E Magnolia Street | Phoenix, AZ 85034

[NemcoFoodEquip.com](http://NemcoFoodEquip.com)

Printed 10/18. Printed in the USA.

