



T&S BRASS AND BRONZE WORKS, INC.

2 Saddleback Cove / P.O. Box 1088
 Travelers Rest, SC 29690



REG. #A2601
 ISO #9001

Model No.
B-0230-LN

Item No.

Travelers Rest, SC: 800-476-4103 Simi Valley, CA: 800-423-0150 Fax: 864-834-3518 www.tsbrass.com

This Space for Architect/Engineer Approval

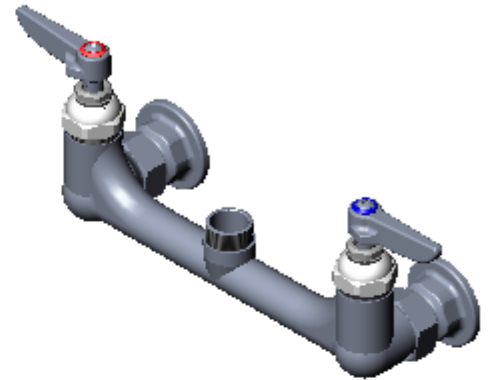
Job Name _____ Date _____

Model Specified _____ Quantity _____

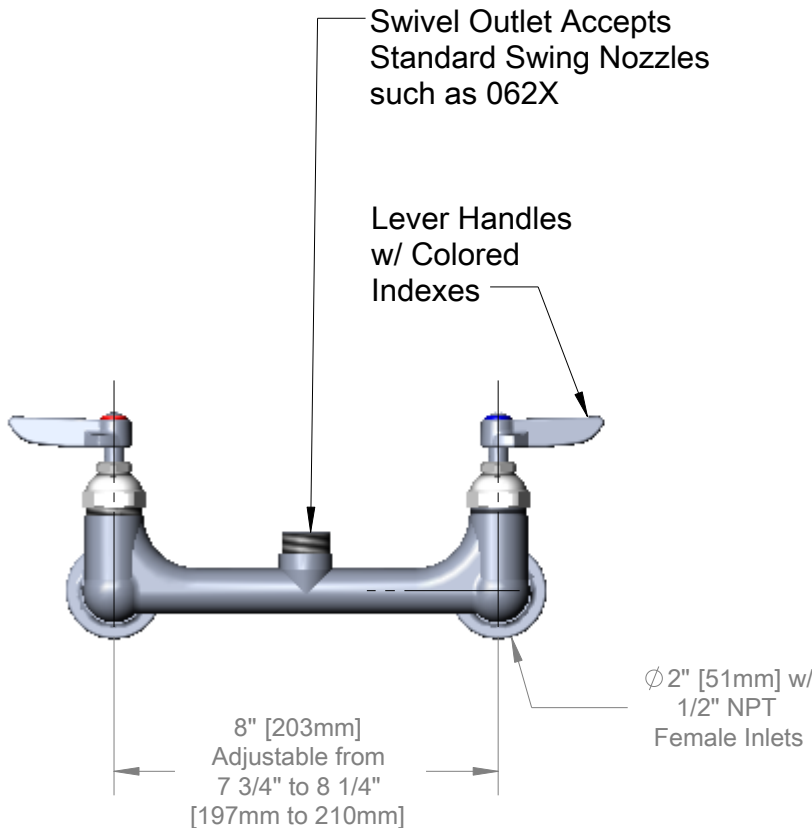
Customer/Wholesaler _____

Contractor _____

Architect/Engineer _____



- Variations or Applicable Options:
- WH6 6" Wrist Action Handles
 - WH4 4" Wrist Action Handles
 - 175F 4-Arm Kitchen Handles



Product Specifications:
 8" c/c Wall Mount Mixing Faucet w/ 1/2" NPT Female Eccentric Inlet Flanges, Lever Handles, Less Nozzle

Drawn WJS	Checked JRM	Approved JHB
Scale: 1:4	Date: 10/19/06	



T&S BRASS AND BRONZE WORKS, INC.

2 Saddleback Cove / P.O. Box 1088
 Travelers Rest, SC 29690



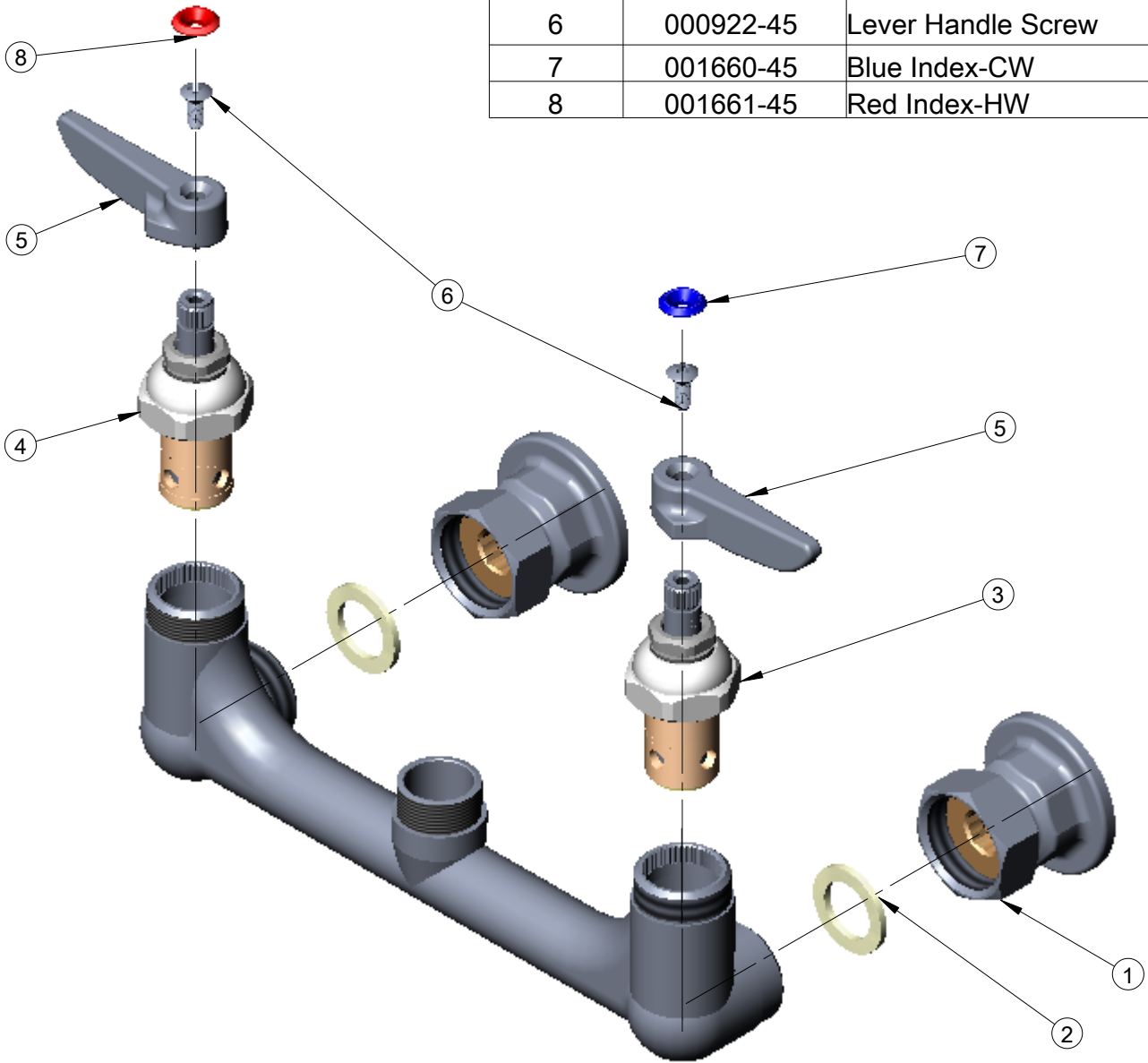
REG. #A2601
 ISO #9001

Model No.
B-0230-LN

Item No.

Travelers Rest, SC: 800-476-4103 Simi Valley, CA: 800-423-0150 Fax: 864-834-3518 www.tsbrass.com

ITEM	PART NO.	DESCRIPTION
1	00AA	00AA Flange Asm
2	001019-45	Cplg Nut Washer
3	005959-40	Eterna Barrel Asm-Cold
4	005960-40	Eterna Barrel Asm-Hot
5	177F	Lever Handle
6	000922-45	Lever Handle Screw
7	001660-45	Blue Index-CW
8	001661-45	Red Index-HW



Product Specifications:

8" c/c Wall Mount Mixing Faucet w/ 1/2" NPT
 Female Eccentric Inlet Flanges, Lever Handles,
 Less Nozzle

Drawn WJS	Checked JRM	Approved JHB
Scale: 1:2		Date: 10/19/06